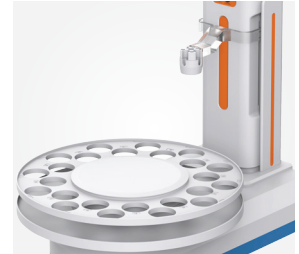


## M500T Multi-parameter Analyzer



**Large color touch screen**  
Easy operation and comfortable experience



**Autosampler available**  
Make measurement more efficient



**User management system**



**Multiple external devices available**  
PC, autosampler, printer, scanning gun, USB flash disk, etc

### GENERAL FEATURES

- Color High contrast LCD touchscreen, 7.0 inches.
- Intelligent operation system provides features including user management, calibration management, method management, data management and etc.
- Multi-reading feature allows auto-read, timed-read and continuous-read.
- Automatic/Manual temperature compensation ensures accurate results.
- Data Storage 1000 sets for each parameter (GLP-compliant).
- Data analysis feature helps user review, compare and recalculate results.
- Support for USB or RS-232 communication.
- Reset feature automatically resumes all settings back to factory default options.
- IP54 waterproof.

### pH

- 1-6 points calibration with Standard Recognition.
- Selectable pH buffer groups, including DIN, NIST, USA, MERK, JIS, GB.
- Support for pH standard group customization.
- Automatic electrode diagnosis with pH slope and offset display.

### Ion

- 1-6 points calibration
- Selectable measurement unit, including µg/L, mg/L, g/L, mmol/L, pX, ppm, ppb, etc.
- Multi-measurement modes are supported, including Direct Reading mode, Standard Addition mode, Sample Addition mode and GRAN mode.
- Over 10 methods are built-in, including F<sup>-</sup>, Cl<sup>-</sup>, Br<sup>-</sup>, I<sup>-</sup>, NO<sub>3</sub><sup>-</sup>, BF<sub>4</sub><sup>-</sup>, NH<sub>4</sub><sup>+</sup>, K<sup>+</sup>, Na<sup>+</sup>, Ca<sup>2+</sup>, Cu<sup>2+</sup>, Pb<sup>2+</sup>, Ag<sup>+</sup> and etc., user-defined method is supported.

### Conductivity

- 1-5 points calibration with Standard Recognition.
- Settable parameters, including cell constant, reference temperature (5/10/15/18/20/25°C), temperature compensation coefficient and TDS factor.
- Temperature compensation type (none, linear, pure water).

### DO

- Support for air-saturated water or zero oxygen calibration.
- Auto barometric pressure compensation.
- Manual Salinity Factor Correction.
- Selectable pressure unit, including kPa, mbar, Torr, Atm.



Model	M500T	
Parameters	pH/EC/ISE/DO/Temp. (mV/ORP/pX/Resistivity/TDS/Sal./DO Saturation)	
pH	Range	-2.000 to 20.000 pH
	Resolution	0.1, 0.01, 0.001pH
	Accuracy	± 0.002 pH
	Calibration Points	Up to 6
	Standard Customization	Yes
	Calibration Reminder	Yes
	Standard Recognition	NIST, GB, DIN, USA, MERK, JIS buffers
	Slope Limit	Yes
mV/ORP	Range	-2000.00 to 2000.00 mV
	Resolution	0.1, 0.01 mV
	Accuracy	reading whichever is greater
	EH ORP Mode	Yes
	ORP Calibration Points	1 custom point (relative mV)
pX	Range	-2.000 to 20.000 pX
	Resolution	0.1, 0.01, 0.001 pX
	Accuracy	± 0.002 pX
	Calibration Points	Up to 6
ISE	Range	1.000e-9 to 9.999e+9
	Units	mol/L, mmol/L, g/L, mg/L, µg/L, ppm, ppb
	Resolution	Up to 4 significant digits
	Accuracy	± 0.3%
	Calibration Points	Up to 6
Conductivity	Range	0.000 µS/cm to 2000 mS/cm
	Resolution	0.001 µS/cm minimum, various with range selection
	Accuracy	± 0.5% FS
	Reference Temperature	5, 10, 15, 18, 20, 25 °C
	Calibration Points	Up to 5
	Calibration Reminder	Yes
Resistivity	Standard Recognition	10 µS/cm, 84 µS/cm, 500 µS/cm, 1413 µS/cm, 12.88 mS/cm; 146.5 µS/cm, 1408 µS/cm, 12.85mS/cm, 111.3mS/cm
	Range	5.00 Ω·cm~100.0 M Ω·cm
	Resolution	0.01 Ω·cm minimum
TDS	Accuracy	± 0.5% FS
	Range	0.000~1000 ppt
	Resolution	0.001 ppm minimum, changed with range
Salinity	Accuracy	± 0.5% FS
	Type	NaCl
	Range	0.0 ~ 80.0 ppt
Dissolved Oxygen Concentration - Polarographic	Resolution	0.1ppt
	Accuracy	± 1ppt
	Range	0.00 to 99.99 ppm
	Resolution	0.01 ppm
	Accuracy	± 0.10 ppm
	Calibration Reminder	Yes
% Saturation -Polarographic	Calibration Points	Air-saturated water or zero point
	Barometric Compensation	Yes
	Manual Salinity Factor Correction	Yes
Temperature	Range	(0.0 to 600)%
	Resolution	0.10%
	Accuracy	± 2.0%
Measurement	Range	-10 to 135 °C, 14 to 275 °F
	Unit	°C, °F
	Resolution	0.1
	Accuracy	± 0.1
Data management	Reading Mode	Auto Read (Fast, Medium, Slow), Timed, Continuous
	Reading Prompts	Reading, Stable, Locked
	Temp. Compensation	ATC, MTC
Inputs	Data Storage	1000 Groups
	GLP Features	Yes
	Log Management	Yes
Outputs	pH Electrode	BNC(Q9)
	DO with Temp. Probe	4-pin aviation connector
	Conductivity with Temp. Probe	5-pin aviation connector
Display options	USB	USB 2.0 flash memory device, PC, scanner, printer, auto-sampler
	RS 232	
	Backlight	Yes
General	Auto Shutdown	1~60 min, off
	IP Rating	IP54
	Date and Time	Yes
General	Power	AC Adapter, 100-240V AC input, DC24V output
	Dimensions	220 × 195 × 68 mm
	Weight	950g (2.09 lb)